



DRYDEN[®]
THE NATURAL CHOICE FOR YOUR TIMBER

**Product
Guide**

Contents

- Dryden** 3
- Colourtone+** 4
 - Tinting using Colourtone+ 4
- WoodOil** 5
 - How does it work? 6
 - Care & Maintenance 7
 - Product Application 8
 - Uses 9
 - WoodOil** Colour Representation 10
- OilStain** 15
 - OilStain** Colour Representation 16
- WoodMaster** 18
 - WoodMaster** Colour Representation 19
- SurfaceCleaner** 21
- LiquidTimberClean** 22
- WaxEndSeal** 23



DRYDEN®

The Natural Choice for your timber.

At *Dryden*, we are all about protecting and enhancing the natural beauty of timber – grain, texture and colour.

In 1999, *Dryden* was established to service the New Zealand housing and construction industry, providing a more fitting protection solution for timber, through our flagship product *Dryden WoodOil*.

Since the beginning, *Dryden* has been dedicated to developing new products for the marketplace. Today, *Dryden WoodOil* remains a trusted and proven product. A range of specialty cleaning and coating products have been added to the range to ensure that there is a product solution available at every step of the process.

Dryden products are the choice of discerning architects and trade professionals who share our ideals of protecting and enhancing the natural beauty of timber; intensifying and revealing what nature has already given us.



Colourtone+

Tinting using Colourtone+

Dryden Colourtones+ are available in a range of colours, that complement the timber character and enhance the grain.

- When added, it provides UV protection to timber, preventing silvering when maintained correctly. It is recommended that when a colour is chosen, that for maximum retention it is used in all coats of *Dryden WoodOil*, *Dryden OilStain* or *Dryden WoodMaster*.

NOTE:

- When *Dryden WoodOil* has *Dryden Colourtone+* added, the base *WoodOil* migrates into the timber, leaving the colour on the surface. The fullness of colour chosen will develop when all coats are applied and time for migration has been allowed. The final finished colour will highlight the timbers' natural colour and grain, which will be influenced by the timber type, colour, and grain along with the amount of oil applied.
- When using more than one pail or container, mix together for colour consistency.
- *Dryden WoodOil Clear* or *Dryden OilStain Clear* applied without a *Dryden Colourtone+* will highlight the timber's natural grains and colour but will weather naturally and silver over time in exposed areas.
- *Dryden Colourtone+* Slate can be used for a silvered appearance under eaves and doorways if a natural uniform look is required.
- The use of colours outside the recommendations of your Timber Supplier / Manufacturer may impact their warranties if not followed.

Timber Suppliers / Manufacturers may have restrictions on colour options across some timber profiles or timber species in their range. *Dryden* recommends you check with your Timber Supplier / Manufacturer on colour limitations for your project.

Product:	Can <i>Dryden Colourtone+</i> be added?
<i>Dryden WoodOil Clear</i>	✓
<i>Dryden OilStain</i>	✓
<i>Dryden WoodMaster</i>	✓

Sizes:	50ml for 1L	200ml for 4L	500ml for 10L	2× 500ml for 20L
--------	-------------	--------------	---------------	------------------



50ml for 1L

200ml for 4L

1× 500ml for 10L

2× 500ml for 20L

WoodOil

Dryden WoodOil is a water-repellent, non-filming, timber protector. With its water repelling properties it helps prevent the absorption of water into timbers, reducing excessive warping, cupping, and splitting of timber, thus extending the lifespan of those timbers.

Dryden WoodOil is a migrating oil. It does not form a film on the surface, and therefore will not crack, flake or peel. Added water repellents and fungicide assist in keeping the timber dimensionally stable.

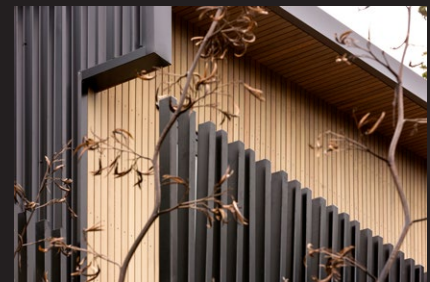
NOTE:

- When *Dryden WoodOil Clear* is applied, timber in exposed environments will weather naturally and silver over time.
- *Dryden Colourtones+* can be added to the *Dryden WoodOil Clear* base to provide UV protection to timber, preventing silvering when maintained correctly.
- *Dryden WoodOil* must be applied to all faces, edges, and cut ends to ensure a full envelope seal prior to fixing.
- Factory coating is a fast, cost effective way of obtaining the recommended envelop seal, removing costly onsite delays.
- Harvesting rainwater. Rainwater that comes into contact with timber coated with *Dryden WoodOil* is not suitable for consumption.
- When *Dryden WoodOil Clear* is re-coated over any silver timber, it will wet the silver patina and look patchy. This patchiness will revert back to the original look over time.
- *Dryden WoodOil* can be used on a variety of timber species, it is **NOT** recommended for **decking applications**, for those hard-wearing surfaces, *Dryden* recommends ***Dryden OilStain***.



Prior to usage, reading the *Dryden WoodOil* Data Sheet is recommended.

Sizes:	1L, 4L, 10L, 20L
Bases:	Clear only, <i>Dryden Colourtones+</i> can be added.



No. of coats exterior new work:

- 2 coat initial system
- 1st coat factory applied or site applied prior to fixing.
- 2nd coat 30–90 days after fixing.

No. of coats interior:

- 1 coat system
- 2nd coat only if deeper colour required, a minimum 30–90 days after 1st coat.

No. of coats maintenance:

- 1 coat

Clean up:	Detergent & hot water or mineral turpentine
Finish:	Matt
Coverage new bandsawn timber:	8–10m ² per litre (low density)
Coverage new dressed timber:	10–12m ² per litre (low density)
Coverage bandsawn plywood:	6–8 m ² per litre
Coverage restored timbers:	6–8m ² per litre (low density)

Maintenance Requirements:

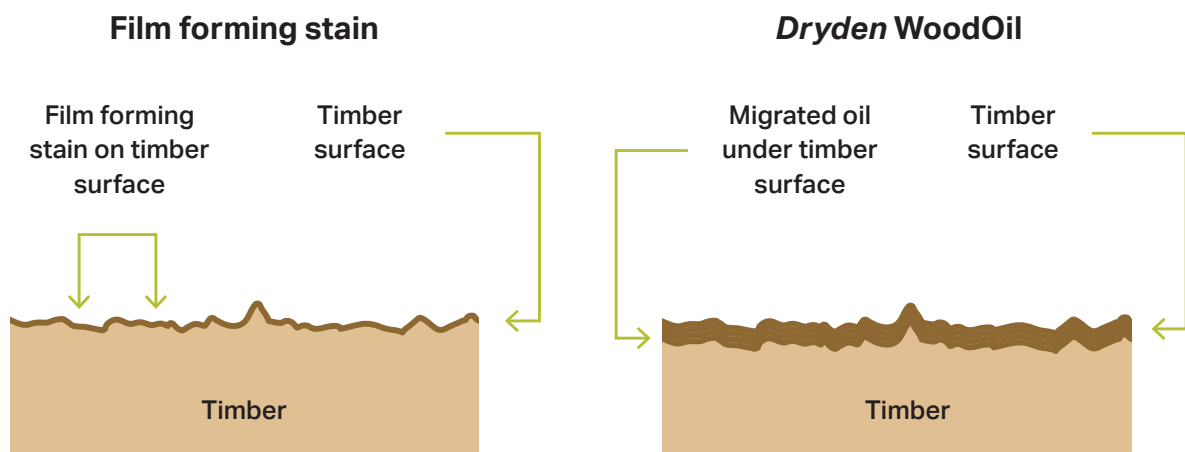
- Dryden WoodOil* with *Dryden Colourtone+* added, up to 2 years from completion of initial coating system.
- Thicker timbers, dressed timber, darker colours and modified timbers, up to 1 year from completion of initial coating system.
- Dryden WoodOil* clear up to 3 years from completion of initial coating system. High exposure areas maximum up to 2 years.

All maintenance requirements are influenced by timber type, grain, colour used, design and exposure to the elements. Subsequent maintenance coats may extend out.

How does it work?

Dryden WoodOil is a migrating oil.

It does not form a film on the surface, and therefore will not crack and peel. *Dryden WoodOil* clear will not fade, however, the underlying timber will change colour and silver naturally while the oil is held within the timber providing protection. *Dryden WoodOil* tinted with Colourtones+ will fade as UV interacts with the Colourtones+ over time. With the timber holding the oil within, it reduces excessive cupping, splitting, warping and movement. *Dryden WoodOil* helps prevent moisture from entering the timber. Provided you maintain the oil within the timber, the reduction in movement will increase the service life of the timber, increasing its effectiveness in providing a barrier to the elements that your home is exposed to.



Coating times and frequencies:

As *Dryden WoodOil* is a migrating oil there always needs to be space within the timber to migrate, so coating times and frequencies must be adhered to, to provide the timber with maximum protection.

When building

Initially when building, timber needs two coats of *Dryden WoodOil*, one coat prior to fixing and a second coat 30–90 days once installed. These two coats help build the quantity of oil within the timber fibres, which helps reduce excessive warping, cupping, and splitting.

Why 30–90 days between first & second coat explained:

As *Dryden WoodOil* is a migrating oil, 30–90 days are required between the first and second coat. This is to allow time for the first coat to migrate away from the surface, leaving space for the second coat. The 30 to 90 day time frame starts from the fixing of the cladding (exposure to the elements). 30 days in warmer months moving to 90 days in colder months (temperature influences migration rate).

Maintenance re-coating

When maintenance re-coating is completed on time it is only one coat and only on the elevations that are starting to show signs of increased absorption of water into the timber and mould growth (*WoodOil* clear) or colour fade and chalking (tinted *WoodOil*). Re-coating over the colour fade and chalking (even and consistent) helps restore the appearance and protection of the timber. When these signs are not apparent it means that the *Dryden WoodOil* is still close to the timber surface still protecting the colour and therefore there is no need to re-coat. Trying to re-coat these areas will result in the oil sitting on the surface as there is no space within the timber for it to go. When maintenance has been left too long, the surface must be cleaned with a strong wash using *Dryden Surface Cleaner* before recoating. In this situation a **second coat** will be required at 3–6 months to rebuild the colour (UV protection for the timber). This longer period of time provides more space in the timber for the second coat.

Care & Maintenance

Annual inspection:

Dryden recommends an annual inspection and soft wash using clean water to remove contaminants, which encourages fungal growth.

Soft wash prior to maintenance inspection (when carried out on time):

Dryden recommends surfaces be cleaned prior to recoating.

The soft wash is intended to clean like rain fall, to remove surface contaminants like dirt, dust, pollen and other environmental grime without disturbing the *Dryden Colourtone+* or the silver patina.

When stubborn dirt and contaminants are present use a soft brush (such as car wash brush or house cleaning brush) and a mild detergent solution to carefully remove the mark, whilst trying not to remove the *Dryden Colourtone+* or disturbing the silver patina.

Strong Wash prior to remedial work of *Dryden WoodOil Clear* or with *Dryden Colourtone+* added (maintenance not carried out on time).

If for any reason maintenance has not been kept up with *Dryden WoodOil Clear* or with *Dryden Colourtone+* added or where timbers have not been previously coated and are silvered, then a stronger wash using *Dryden SurfaceCleaner* is recommended prior to re-coating with *Dryden WoodOil*. Do not use bleach-based products.

NOTE:

- After a strong wash, 2 coats of *Dryden WoodOil* is recommended with at least 3–6 months (for aged and damaged timber) between the first and second coat.
- Prior to commencing any cleaning and maintenance read the *Dryden WoodOil Cleaning & Maintenance Guide*.

Maintaining a silver patina (*Dryden WoodOil Clear*):

If for any reason maintenance soft washes have not been kept up and mould spores have become apparent within the timbers silvered patina, *Dryden* recommends using a product which will selectively kill mould and lichen on the exterior timber surface over an extended period. Then over time the weathering process will allow the dead growth to naturally erode away without damaging the silver patina.



Re-coating Requirements:

- Dryden WoodOil* with *Dryden Colourtone* added, up to 2 years for exterior timber from completion of initial coating system.
- Thicker timbers, dressed timber, darker colours and modified timbers, up to 1 year from completion of initial coating system if required.
- Dryden WoodOil* clear up to 3 years from completion of initial coating system. High exposure areas maximum up to 2 years on exterior timbers.

All maintenance requirements are influenced by timber type, grain, colour used, design and exposure to the elements. Subsequent maintenance coats may extend out.

Product Application

Application tools

Dryden WoodOil applies easily and can be applied by:

Speed brush:

Preferred application method for most surfaces. Fine bristled speed brush. (Not lambskin or long pile speedbrush).

Spray:

Use airless spray equipment. Choose a nozzle to deliver a low pressure coarse spray.

Brush:

For uneven or rough surfaces, a wide good quality bristle brush is best.

Roller:

Use a medium nap for most timbers.

Application coating

- When using more than one pail, ensure they are mixed together for colour consistency.
- *Dryden WoodOil* must be used as supplied, never add thinners or alter in any way.
- *Dryden WoodOil* needs to be stirred regularly (with or without Colourtone+ added) to ensure a consistent product and colour is applied.
- Work in manageable sized areas linearly along boards, with the grain.
- Always apply coating at the correct coverage rate.
- Leave the whole area with a uniform look and colour (when *Dryden Colourtone+* has been used) at the correct application rate, free from coating defects.



Application rates are important

Dryden WoodOil is different to stains. Stains rely on solvent evaporation as part of the drying process, along with surface penetration around the surface fibres for adhesion whilst wet. Stains have a specific drying time that allows other coats to key to them.

Dryden WoodOil migrates into the timbers, it does not dry on the surface. If too much is applied at once it will remain wet on the surface as there is no space for the oil to migrate – so coverage rates are important and re-coating times are best further apart.

NOTE:

Applied at the correct coverage rate, *Dryden WoodOil* will lose its gloss / wet look from the face of the timber, in most situations, by the next day.

With *Dryden WoodOil* there is an amount of oil waiting to migrate into the timber. If the fibres and cells are full, and you apply more oil too soon, the surface of the timber will remain wet. If good practice has been followed the timber surface will lose its gloss / wet look from the face of the timber usually by the next day.



Uses

What can it be applied to?

To most uncoated or unsealed timber.

Areas where it can be applied

Exterior:

- Cladding dressed or bandsawn
- Garage doors
- Front doors
- Timber joinery
- Exterior plywood
- Fences
- Pergolas
- Most modified timbers (refer manufacturer)

Interior:

- Ceiling, sarking (indoor-outdoor flow)
- Feature walls (areas that don't require regular wiping or cleaning)

Areas where it CANNOT be applied

Exterior:

- Bamboo and other grasses (monocotyledons)
- Decking applications
- Outdoor furniture

Interior:

- Timber flooring
- Shelving
- Interior furniture
- Bathrooms / wet areas
- Wet area wall panelling
- Kitchen cabinets
- Any areas that require wiping or cleaning

NOTE:

Dryden WoodOil can be used on a variety of timber species, it is **NOT** recommended for **decking** or **outdoor furniture**, for these hardwearing surfaces, *Dryden* recommends ***Dryden OilStain***.



WoodOil Colour Representation



Clear on New Cedar (will weather to a Silver Patina)



Clear on Weathered Cedar

Key:

1/4 Sawn Western Red Cedar Dressed

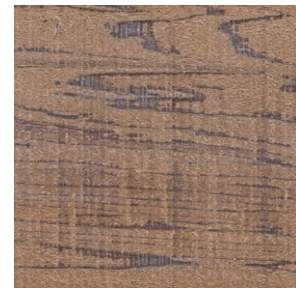
1/4 Sawn Western Red Cedar Bandsawn

Flat Cut Western Red Cedar Bandsawn

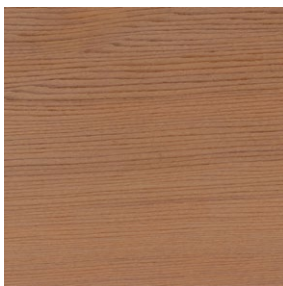
Western Red Cedar (Dark timber tone) Bandsawn



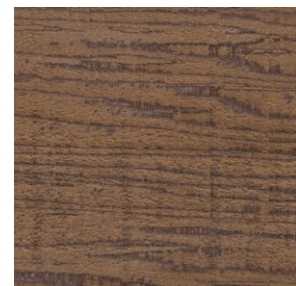
Dune



Lite Oak



Dryhills



NOTE:

All colour samples are two coats on Western Red Cedar of a light to medium tone and a dark timber tone, with various grain patterns. This demonstrates the natural variation when using transparent products and is indicative only. The actual colour achieved on your project will be influenced by your timber type, tone, grain and application rate. Availability of different timber cuts will be dependent on timber availability from your chosen timber supplier. Colour representations in brochures and on websites are a guide only due to printing and screen limitations. Due to these variations we recommend that the chosen colour is trialled on your actual timber prior to coating your timber. Dryden WoodOil colours are coloured aligned to Dryden OilStain and Dryden WoodMaster colours, allowing indoor-outdoor flow when coating timbers of the same species.

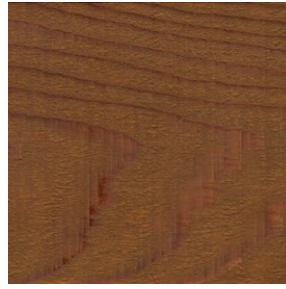
Key:

1/4 Sawn Western
Red Cedar Dressed

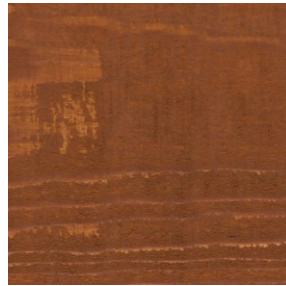
1/4 Sawn Western
Red Cedar Bandsawn

Flat Cut Western
Red Cedar Bandsawn

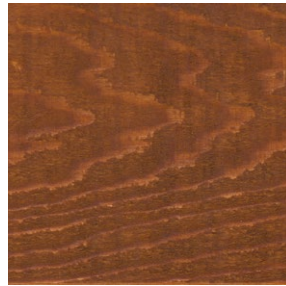
Western Red Cedar
(Dark timber tone) Bandsawn



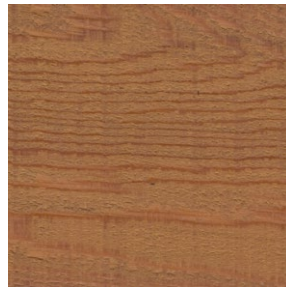
Elm



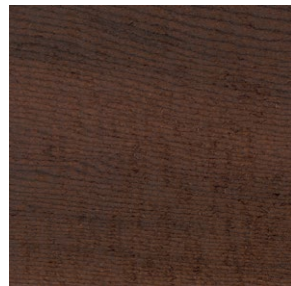
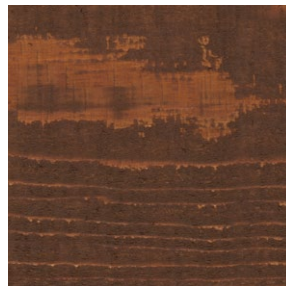
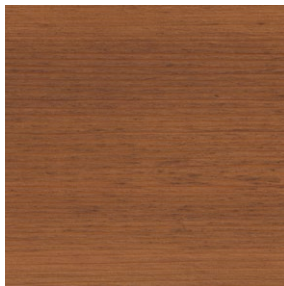
Autumn



Copper



Cypress



Oropo

NOTE:

All colour samples are two coats on Western Red Cedar of a light to medium tone and a dark timber tone, with various grain patterns. This demonstrates the natural variation when using transparent products and is indicative only. The actual colour achieved on your project will be influenced by your timber type, tone, grain and application rate. Availability of different timber cuts will be dependent on timber availability from your chosen timber supplier. Colour representations in brochures and on websites are a guide only due to printing and screen limitations. Due to these variations we recommend that the chosen colour is trialled on your actual timber prior to coating your timber. Dryden WoodOil colours are coloured aligned to Dryden OilStain and Dryden WoodMaster colours, allowing indoor-outdoor flow when coating timbers of the same species.

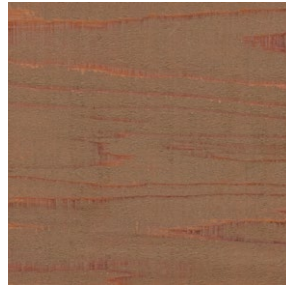
Key:

1/4 Sawn Western Red Cedar Dressed

1/4 Sawn Western Red Cedar Bandsawn

Flat Cut Western Red Cedar Bandsawn

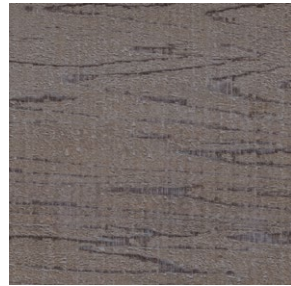
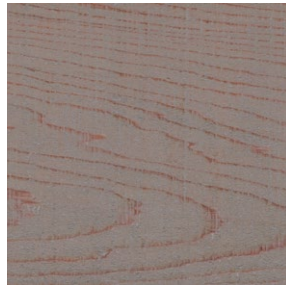
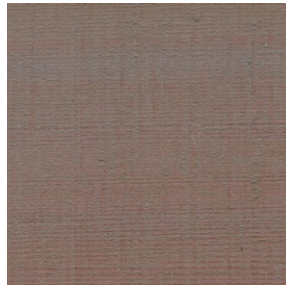
Western Red Cedar (Dark timber tone) Bandsawn



Driftwood



Platinum



Slate



Stone



Ironsand

NOTE:

All colour samples are two coats on Western Red Cedar of a light to medium tone and a dark timber tone, with various grain patterns. This demonstrates the natural variation when using transparent products and is indicative only. The actual colour achieved on your project will be influenced by your timber type, tone, grain and application rate. Availability of different timber cuts will be dependent on timber availability from your chosen timber supplier. Colour representations in brochures and on websites are a guide only due to printing and screen limitations. Due to these variations we recommend that the chosen colour is trialled on your actual timber prior to coating your timber. Dryden WoodOil colours are coloured aligned to Dryden OilStain and Dryden WoodMaster colours, allowing indoor-outdoor flow when coating timbers of the same species.

Key:

1/4 Sawn Western
Red Cedar Dressed

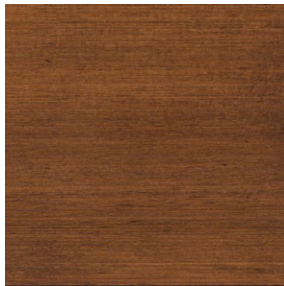
1/4 Sawn Western
Red Cedar Bandsawn

Flat Cut Western
Red Cedar Bandsawn

Western Red Cedar
(Dark timber tone) Bandsawn



Walnut



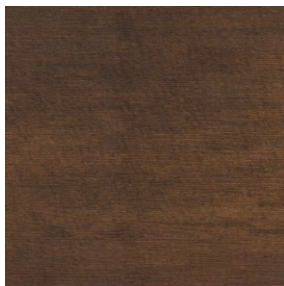
Black Teak



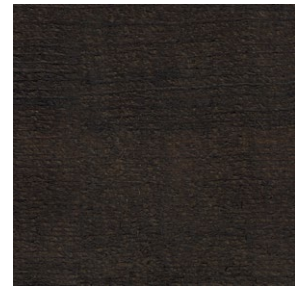
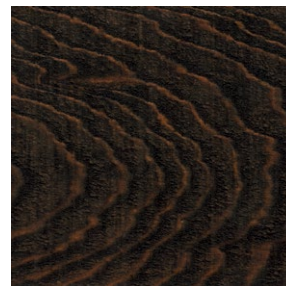
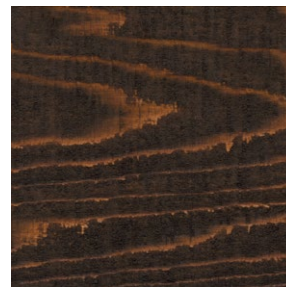
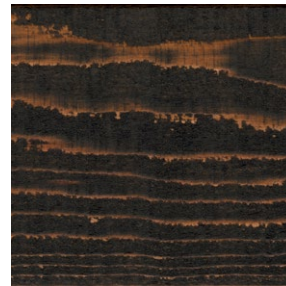
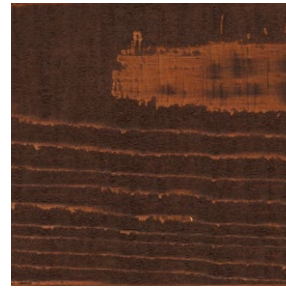
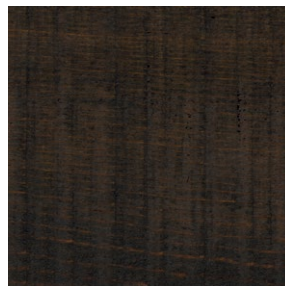
Dark



Black X



Midnight



NOTE:

All colour samples are two coats on Western Red Cedar of a light to medium tone and a dark timber tone, with various grain patterns. This demonstrates the natural variation when using transparent products and is indicative only. The actual colour achieved on your project will be influenced by your timber type, tone, grain and application rate. Availability of different timber cuts will be dependent on timber availability from your chosen timber supplier. Colour representations in brochures and on websites are a guide only due to printing and screen limitations. Due to these variations we recommend that the chosen colour is trialled on your actual timber prior to coating your timber. Dryden WoodOil colours are coloured aligned to Dryden OilStain and Dryden WoodMaster colours, allowing indoor-outdoor flow when coating timbers of the same species.

New Exterior Coating System

- **First coat factory or site applied prior to fixing**
(Ensure all cut ends are coated during fixing)
- **Second coat 30–90 days after fixing or exposure to the elements**
- **Annual inspection & soft wash to remove contaminants and determine coating condition**
- **Soft wash prior to maintenance, when maintenance is carried out on time**
One maintenance coat required
- **Strong wash prior to maintenance, when maintenance is not carried out on time**
Two maintenance coats with 3–6 months between coats

Refer to the Product Data Sheet. Data sheets are available at dryden.co.nz

OilStain

Dryden OilStain is a deeply penetrating oil that nourishes most exterior timber species from within.

It does not film on the surface of the timber and will allow the timber to gradually fade over time to a natural grey. You can extend the life of your timber with simple, regular maintenance. *Dryden Colourtone+* can be added to provide UV protection and a longer lasting finish. Suitable for application on decking, hardwood, outdoor furniture and other exterior timbers. *Dryden OilStain* does not need to be sanded or stripped before overcoating if surface is in an even, sound condition.

NOTE:

- Ensure the surface is clean and free from debris, droppings and stains. To remove stains or grey / weathered appearance, clean timber with *Dryden LiquidTimberClean*.
- *Dryden OilStain* should be reapplied when the timber is no longer visibly repelling water. We recommend routine maintenance inspections every 6 months to ensure the timber is still protected from water, or as frequently as necessary to retain your preferred timber appearance.
- For best performance, apply at least 1 coat to all sides of the timber prior to installation.
- If mould is present or if timber is in a mould prone area, use *Dryden LiquidTimberClean* or *Dryden Surface Cleaner* to remove surface mould effectively as the first step of preparing the timber for coating.
- Tintable to a range of *Dryden Colourtone+* colours

Application

Dryden OilStain does not need to be sanded or stripped before overcoating if existing *Dryden OilStain* is in an even and sound condition. For best performance, apply at least 1 coat to all sides of the timber prior to installation. Stir *Dryden OilStain* thoroughly before and during use with a flat blade stirrer.

Adding Colourtone+

For a longer lasting finish and / r added UV protection, add *Dryden Colourtone+* in your selected colour. Stir thoroughly to incorporate evenly. When using two different tinted cans of the same colours, it is recommended that the product be mixed in the same container to achieve a uniform finish.

Sizes:	1L, 4L, 10L
Bases:	Clear only, <i>Dryden Colourtones+</i> can be added.



Prior to usage, reading the *Dryden OilStain* Data Sheet is recommended.

Note: This product is not suitable to be used on bamboo.



Surface Preparation:

New bare timber, new pre-oiled timber (including mineral oil), rejuvenate bare grey/weathered:

For best results, we recommend cleaning timber with *Dryden Liquid Timber Clean* to ensure surface is free from debris, droppings and stains.

Maintain bare grey/weathered timber:

Do not use a timber cleaner. Ensure surface is clean by washing with water.

Existing coating in poor condition:

Remove coating by using a combination of *Dryden Liquid Timber Clean* and power washing. For more information, refer to the *Dryden Liquid Timber Clean* data sheet and use pressure suitable for your timber type and condition to avoid damaging the timber.

Paints, varnishes, or coatings in varied condition:

Paints, varnishes, or coatings that have deteriorated unevenly, remove all existing coating by using a coatings stripper or sand back to bare timber. Then clean with *Dryden Liquid Timber Clean*.

Clean up:

Clean up with mineral turpentine or hot water and detergent. Use a wiping rag on smooth surfaces and a brush on rough surfaces.

Finish:

Matt

Coverage:

10–20 m²/L per coat. Coating times and coverage may vary due to seasonal temperature, timber porosity, moisture content, timber type and previous coats applied.

OilStain Colour Representation

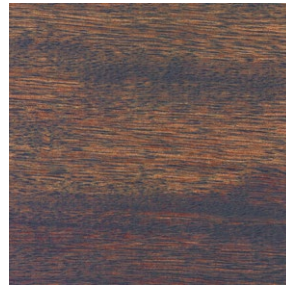
Kwila



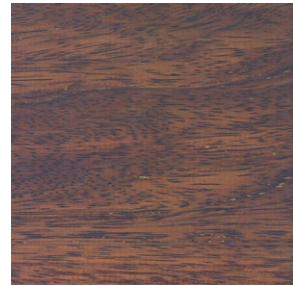
Autumn



Black Teak



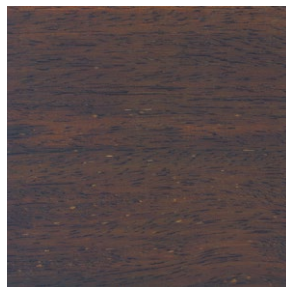
Black-X



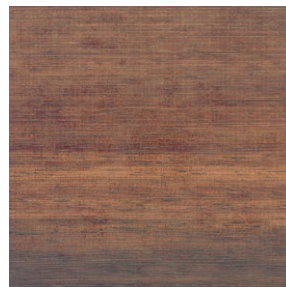
Copper



Cypress



Dark



Driftwood



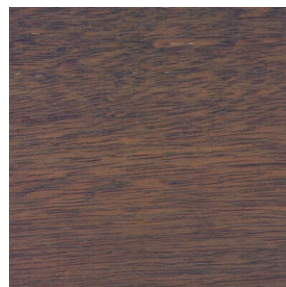
Dryhills



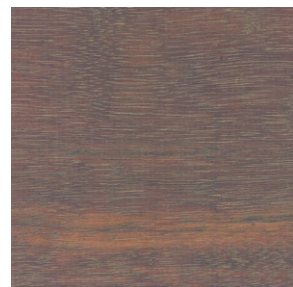
Dune



Elm



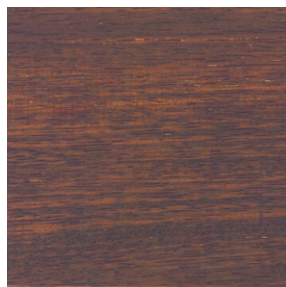
Ironsand



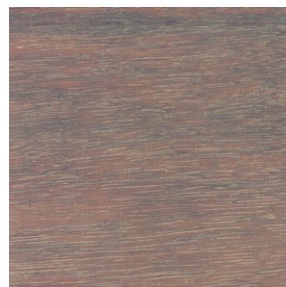
Lite Oak



Midnight



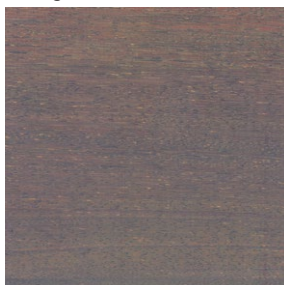
Oropo



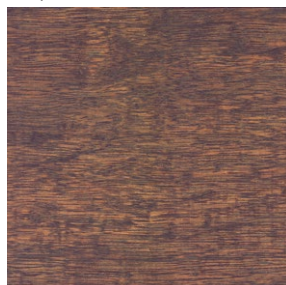
Platinum



Slate



Stone



Walnut

NOTE:

Colour representations are a guide only. The actual colour achieved will be influenced by your timber type, tone, grain and application rate. To ensure you achieve the finish you want, we recommend that you test your colour choice prior to coating.

®Dryden is a registered trade mark.

OilStain Colour Representation

Treated Pine



Autumn



Black Teak



Black-X



Copper



Cypress



Dark



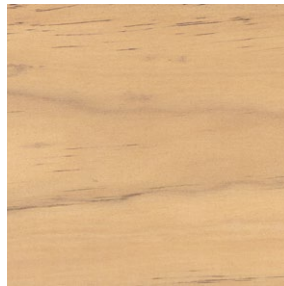
Driftwood



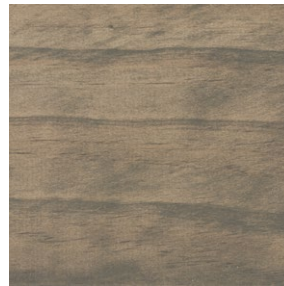
Dryhills



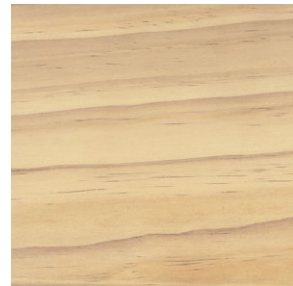
Dune



Elm



Ironsand



Lite Oak



Midnight



Oropo



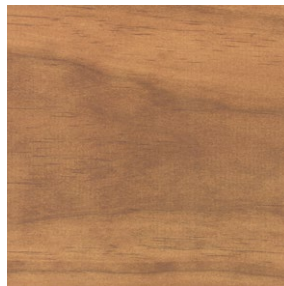
Platinum



Slate



Stone



Walnut

NOTE:

Colour representations are a guide only. The actual colour achieved will be influenced by your timber type, tone, grain and application rate. To ensure you achieve the finish you want, we recommend that you test your colour choice prior to coating.

®Dryden is a registered trade mark.

WoodMaster

Dryden WoodMaster is a decorative low build timber stain.

Dryden WoodMaster decorates and enhances the natural beauty of timber grain, and is available in a wide range of colours to match the Dryden WoodOil.

It can also be applied to timber panelling, doors, trim, sarking, cabinets etc, dressed and bandsawn timbers. Fungicides are added to Dryden WoodMaster to give timber protection where required.

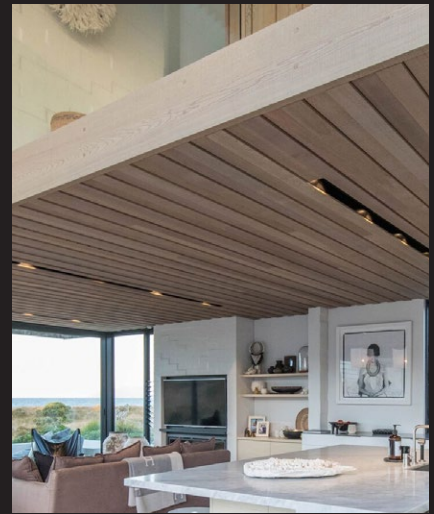
NOTE:

- Dryden WoodMaster must have a Dryden Colourtone+ added when used externally to provide UV protection. Dryden WoodMaster when used internally can be used with or without Dryden Colourtone+.
- Over application will result in a shiny and uneven appearance and preparatory sanding of decorative stains can be problematic. Refer Dryden WoodMaster data sheet for full information prior to starting.
- Sanding small isolated patches such as any timber joints will show through subsequent coats, due to the transparent nature of the product. Stains are unable to be sanded between coats. Refer Dryden WoodMaster Data Sheet for full information prior to starting project.
- Dryden WoodMaster must be overcoated with a 'clear' oil based polyurethane when used in wet areas such as bathrooms and laundries.
- For higher protection and cleanability of hardwearing areas (kitchen cabinets, doors), Dryden WoodMaster can be overcoated with a 'clear' water-based or oil-based polyurethane.



Due to the nature of changing the colour of timber with a transparent product, reading the *Dryden WoodMaster Data Sheet* available from the *Dryden* website at dryden.co.nz is recommended.

Sizes:	1L, 4L, 10L
Bases:	Clear only, <i>Dryden Colourtone+</i> tinters can be used in <i>Dryden WoodMaster</i>



No. of coats interior:	1-2 coats depending on depth of colour required. Can be clear top coated.
No. of coats exterior:	A minimum of 2 coats are required.
Recoat:	12 hours
Dry time:	24 hours
Clean up:	Mineral turpentine
Finish:	Matt
Coverage new dressed timbers:	10-15m ² per litre (low density)
Coverage new hardwood timbers:	12-18m ² per litre (high density)
Coverage plywoods:	5-8m ² per litre

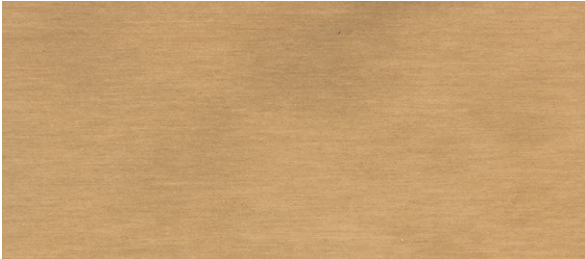
WoodMaster Colour Representation

Radiata Pine Interior Plywood

Dressed Western Red Cedar



Dune



Driftwood



Platinum



Slate



Elm

NOTE:

Dryden WoodMaster colours are shown as two coats on Interior Radiata pine and dressed Western Red Cedar. This demonstrates the natural variation when using transparent products and is indicative only. The actual colour achieved on your project will be influenced by your timber type, tone, grain and application rate. Colour representations in brochures and on websites are a guide only due to printing and screen limitations. Due to these variations we recommend that the chosen colour is trialled on your actual timber prior to coating your timber. Dryden WoodOil colours are coloured aligned to Dryden OilStain and Dryden WoodMaster colours, allowing indoor-outdoor flow when coating timbers of the same species.

Radiata Pine Interior Plywood



Copper



Autumn



Walnut

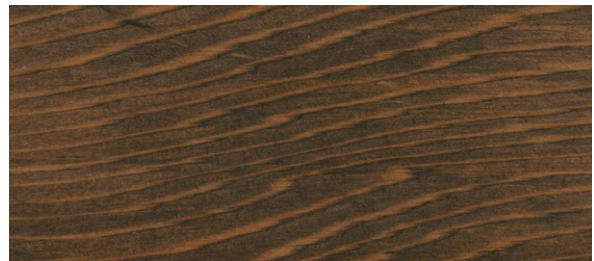


Dark



Midnight

Dressed Western Red Cedar



NOTE:

Dryden WoodMaster colours are shown as two coats on Interior Radiata pine and dressed Western Red Cedar. This demonstrates the natural variation when using transparent products and is indicative only. The actual colour achieved on your project will be influenced by your timber type, tone, grain and application rate. Colour representations in brochures and on websites are a guide only due to printing and screen limitations. Due to these variations we recommend that the chosen colour is trialled on your actual timber prior to coating your timber. Dryden WoodOil colours are coloured aligned to Dryden OilStain and Dryden WoodMaster colours, allowing indoor-outdoor flow when coating timbers of the same species.

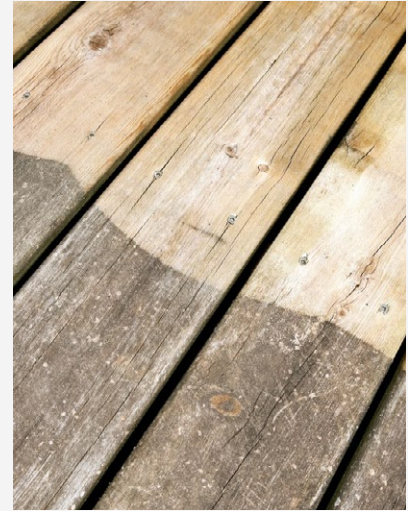
SurfaceCleaner

Dryden SurfaceCleaner has been designed to restore old, weathered, and dirty timber by helping remove oxidised (silvering) timber fibre, mould, dirt, grime, and mild watermarks.

Dryden SurfaceCleaner can be used on external cladding, decking, shingles and other timber surfaces. It is well suited to cleaning painted surfaces including oxidised paint prior to recoating.

NOTE:

- *Dryden* SurfaceCleaner contains no damaging caustic or hypochlorite bleach.
- Clean timber in shade out of direct sunlight or on overcast days.
- Direct sun and warmth will evaporate product therefore it will not remain active.
- When cleaning timber using a waterblaster, it is important to evaluate the timber to be cleaned and use the appropriate method and pressure to avoid damaging the timber surface.



Prior to usage, reading the *Dryden* SurfaceCleaner Data Sheet is recommended.

Directions for use:

- Mix 100g of *Dryden* SurfaceCleaner with 10 litres of clean water in a clean container (or pump spray pack) and apply directly to surface to be cleaned.
- Saturate surface to be cleaned, starting from bottom going to the top, and leave for 15 minutes, keeping wet (spray mist).
- After saturating, waterblast off with maximum 870–1200 psi pressure and wide fan setting (no pencil or turbo nozzle) with long sweeping motions linearly in the direction of timber, feathering on and off at the end of each sweep, starting at the top of the area to be cleaned.
- Watch water pressure levels to avoid damaging the timber surface.

Usage Ratio: 10g/1L Water
100g/10L Water

NOTE:

Ten litres of made up solution will clean approximately 60–70 square metres of timber surface depending on the porosity of the timber and environmental conditions when applying.

Sizes:	1kg
--------	-----

LiquidTimberClean

Dryden LiquidTimberClean is an effective cleaning product which can be used to freshen and brighten dulled timber and will help to improve any cosmetic staining and blemishes.

Dryden LiquidTimberClean helps remove watermarks, environmental and industrial contamination, chemical marks and mould stains and can be applied to most timbers including new and restored timbers.

NOTE:

Dryden LiquidTimberClean can be used to improve cosmetic staining and blemishes caused by:

- Metal or aluminium filings etc (iron staining).
- Caustic splash form concreting, aggregate drive wash, cement-based tile adhesives etc.
- Dust from cutting concrete, fibrolite, masonry blocks etc.
- Accumulated environmental grime, exhaust smut etc.
- Severe watermarks, dulled timber that spoil the cosmetic appearance.
- Always test on an inconspicuous area for suitability before full application.



Prior to usage, reading the *Dryden* LiquidTimberClean Data Sheet is recommended.

Sizes:	1L, 4L
--------	--------



Directions for use:

- Painted surfaces, joinery, hardware and surrounding areas that may come in contact with *Dryden* LiquidTimber Cleaner must be covered and protected. Always rinse off cleaner that comes in contact with these areas immediately. Application must be done either in shade or on overcast days to prevent the product drying during the cleaning process.
- For general cleaning of cosmetic marks and stains mix *Dryden* LiquidTimberClean 50/50 with clean water and wipe with sponge to the full length of the affected board.
- When marking is particularly stubborn, apply *Dryden* LiquidTimberClean neat directly to these troubled areas. Always keep wet and active until marks are acceptable or gone. Repeat applications may be necessary.
- Continually wipe runs during the waiting process, this may take several hours.
- Once the targeted marks are gone and or the timber has brightened, blend total area with 50/50 mix to even area out. Then rinse the timber down with copious amounts of clean water until all soapiness has gone, particularly in grooves and joints. Once dry re-oil timbers for protection. This process applies to general as well as targeted cleaning.

NOTE:

Personal Protection Equipment (PPE) will be required, refer *Dryden* LiquidTimberClean data sheet.

Usage Ratio: 50/50 with water general use. Neat on troubled areas.

WaxEndSeal

Dryden WaxEndSeal is a wax emulsion designed to assist with sealing vulnerable weather exposed cut ends of timber.

Dryden WaxEndSeal is specifically formulated to help minimise the rate of moisture ingress and egress in timber end grain.

Dryden WaxEndSeal helps to reduce excessive moisture changes, which decreases end grain defects such as checking in sawn timbers and splitting.

Dryden WaxEndSeal is easy-to-use and maintain and helps to provide timber stability.

NOTE:

- *Dryden WaxEndSeal* can be used on architectural builds where weather exposed ends such as hardwood beams, timber screens, LVL timbers, laminated timber beams and posts etc that need ultimate protection.
- Avoid *Dryden WaxEndSeal* on any aesthetic faces or where a *Dryden* product is to be applied, as coating after application cannot be achieved.
- *Dryden WaxEndSeal* is not recommended for sealing cut ends of cladding and decking etc prior to fixing. This must be done with the same product and colour that was used to pre-coat the timber.



Prior to usage, reading the *Dryden WaxEndSeal* Data Sheet is recommended.

Sizes:	1L
--------	----



Directions of use:

- *Dryden WaxEndSeal* must be applied after appropriate coats (new build: After two coats. Maintenance or re-coat: After one coat) of *Dryden WoodOil* (with or without *Dryden Colourtone+*) have been left to migrate for a minimum of 7 days.
- Be sure to avoid *Dryden WaxEndSeal* on any aesthetic faces or where *Dryden* product is to be applied, as coating with a different product after application cannot be achieved.
- *Dryden WaxEndSeal* is milky in appearance but will dry clear.

NOTE:

One Litre of Dryden WaxEndSeal, when applied as directed, will cover approximately 6m² per litre, depending on dryness and porosity of the end grain.



Permanently exposed end grain

DRYDEN®

Contact Us

For more information on the entire *Dryden* range,
Freecall **0800 379 336** or visit **dryden.co.nz**

For orders and enquiries, email **info@dryden.co.nz**

Dryden® is a registered trade mark of DuluxGroup
(New Zealand) Pty Ltd.

Dryden WoodOil, 150 Hutt Park Road,
Lower Hutt 5010, New Zealand.

Timber and Liquid Samples can be ordered online
www.dryden.co.nz

Version June 2023